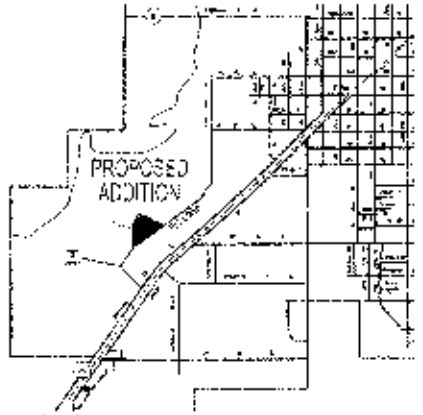
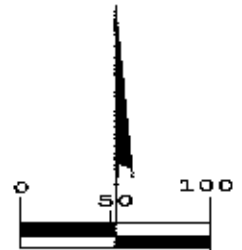


FINAL PLAT OF LEMARS BUSINESS PARK, SECOND ADDITION, LEMARS, IOWA A REPLAT OF LOTS 5 THRU 8, LEMARS BUSINESS PARK, FIRST ADDITION, LEMARS, IOWA MLS# 13871



VICINITY SKETCH
NOT TO SCALE



SCALE IN FEET
1" = 100'

Date of Survey = March, 2006

○ = Set 1/2" Rebar W/Red Cap #10315
● = Found 1/2" Rebar W/Red Cap #10315

ZONING

EXISTING = B-2

Subdivider

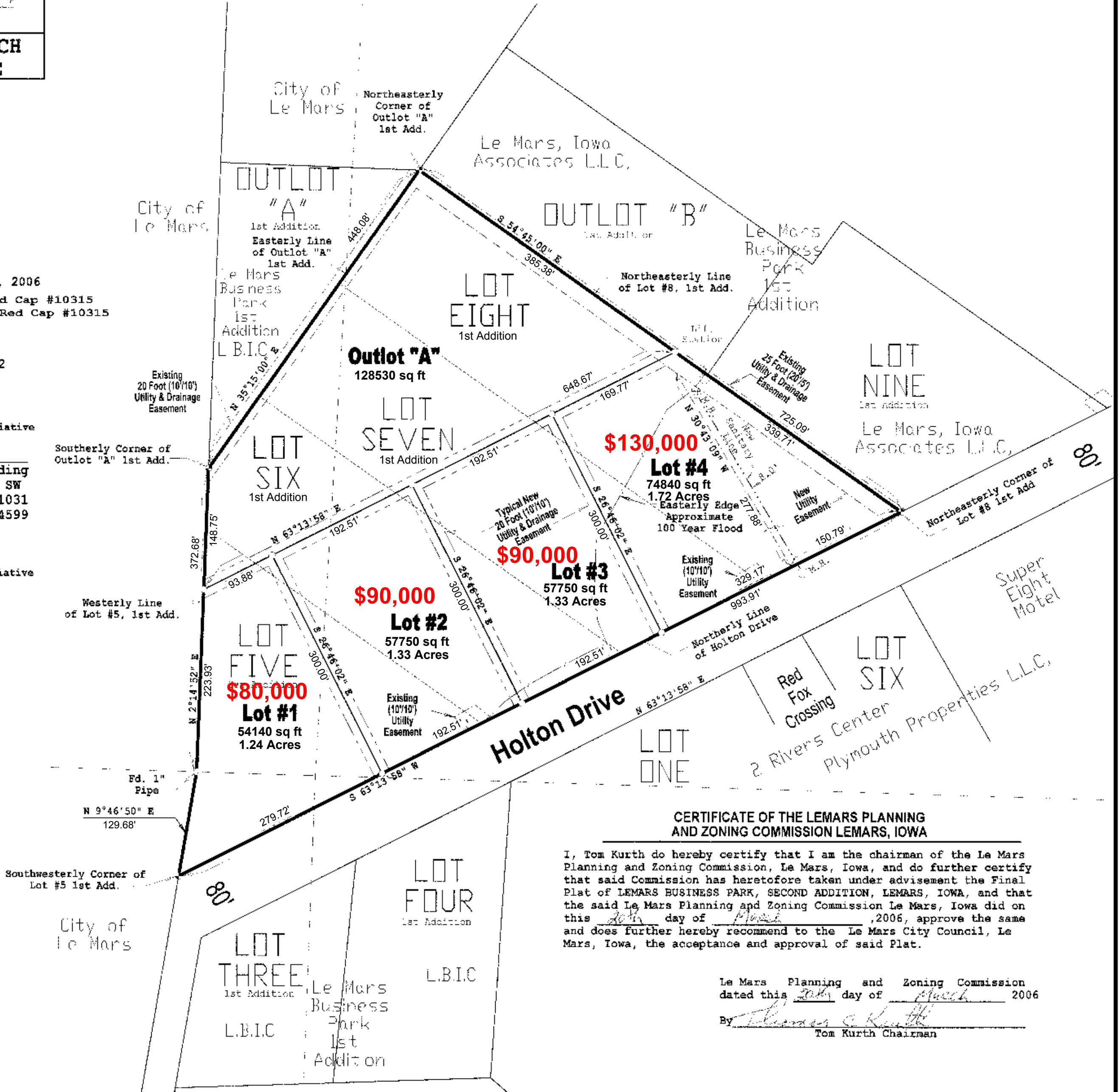
Le Mars Business Initiative

SURVEYOR

David L. Wilberding
515 Hawkeye Ave SW
Le Mars, Iowa 51031
Phone (712) 548-4599

Owner

Le Mars Business Initiative



CERTIFICATE OF THE LEMARS PLANNING AND ZONING COMMISSION LEMARS, IOWA

I, Tom Kurth do hereby certify that I am the chairman of the Le Mars Planning and Zoning Commission, Le Mars, Iowa, and do further certify that said Commission has heretofore taken under advisement the Final Plat of LEMARS BUSINESS PARK, SECOND ADDITION, LEMARS, IOWA, and that the said Le Mars Planning and Zoning Commission Le Mars, Iowa did on this 20th day of March, 2006, approve the same and does further hereby recommend to the Le Mars City Council, Le Mars, Iowa, the acceptance and approval of said Plat.

Le Mars Planning and Zoning Commission
dated this 20th day of March 2006
By Thomas C. Kurth
Tom Kurth Chairman

CITY ENGINEER'S CERTIFICATE

I, Scott P. Langel, City Engineer of Le Mars, Plymouth County, Iowa, do hereby certify that the boundary lines of the Final Plat of LEMARS BUSINESS PARK, SECOND ADDITION, LEMARS, IOWA and the lot lines therein conform with the requirements as provided for in the Subdivision Ordinance, and that all dimensions both lineal and angular, necessary for the location of lots and easements are shown, that proposed improvements meet accepted engineering design practice and are in conformance with the specifications required by the Ordinances of Le Mars, Plymouth County, Iowa.

Scott P. Langel 3/21/06
Scott P. Langel, P.E. Iowa Reg. No. 10537
City Engineer, Le Mars, Plymouth County, Iowa

CERTIFICATE OF CITY CLERK

I, Beverly Langel, City Clerk of the City of Le Mars, Iowa, do hereby certify that the City Council of the City of Le Mars, Iowa, did adopt a resolution approving the LEMARS BUSINESS PARK, SECOND ADDITION, LEMARS, IOWA: Said resolution was adopted by the City Council of said City on the 20th day of March, 2006, and approved by the Mayor of said City on said date. The full, true, and complete resolution is on record in the office of said City Clerk.

Dated this 20th day of March 2006.

Beverly Langel
Beverly Langel
City Clerk

LEGAL DESCRIPTION:

Lots Five thru Eight inclusive of Le Mars Business Park First Addition, City of Le Mars, Plymouth County, Iowa.

Contains 8.56 Acres, subject to any and all Easements of Record.

For the purpose of this Survey the Northeastly line of aforesaid Lot Eight is assumed to bear S 54°45'00" E.

SURVEYOR'S CERTIFICATE

I, DAVID L. WILBERDING, A DULY LICENSED LAND SURVEYOR UNDER THE PROVISIONS OF THE LAWS OF THE STATE OF IOWA, HOLDING CERTIFICATE NO. 10315, DO HEREBY CERTIFY THAT THIS PLAT KNOWN AS LEMARS BUSINESS PARK, SECOND ADDITION, LEMARS, IOWA, IS A TRUE REPRESENTATION OF A SURVEY MADE BY ME OR UNDER MY DIRECT SUPERVISION, AND THAT THE SAME IS LOCATED UPON AND COMPRISES THE WHOLE OF THE ABOVE DESCRIBED PROPERTY. I DO HEREBY CERTIFY THAT THERE ARE CONTAINED IN SAID DESCRIPTION THE LOTS AS DESCRIBED IN THE SUBDIVISION PLATTED; THAT THE LOTS ARE OF THE DIMENSIONS, NUMBERS, NAMES, AND LOCATIONS AS SHOWN ON SAID PLAT, AND THAT IRON STAKES ARE DRIVEN AT EACH CORNER OF EVERY LOT OF SAID SUBDIVISION.

DATED AT LEMARS, IOWA 3-6-06

David L. Wilberding
DAVID L. WILBERDING IOWA NO. 10315

MY LICENSE RENEWAL DATE IS DECEMBER 31, 2007

Number of Pages covered by this certification. = 1



Professional Surveying Services Inc.
David L. Wilberding
515 Hawkeye Ave SW ~ Le Mars, Iowa 51031
Phone 712.548.6325 ~ Fax 712.548.4599 ~ Email dwilberding@yahoo.com